

Create lightfull happiness

COLLECTION 2023

**Garden
Lights**

UK's Largest Techmar Distributor
www.gardenlightshop.com

Tel: 01276 903228
Email: sales@gardenlightshop.com
Free planning service available

Enjoy special moments

Garden lights has a wide range of **12-Volt outdoor lighting**. Gather inspiration from our brochure, social media channels and visit our stockists.



12
volt

**Plug
& play**

5
years
warranty



New in 2023	4
Outdoor lifestyle	8
System explanation	10
Switch	14
Smart	15
Smart lights	16
Feel the industry	18
Filament LED	20
Spotlights	22
Wall lights	24
Post lights	26
Deck- / uplights	28
Decorative lights	30
Sets	32
Accessories	36

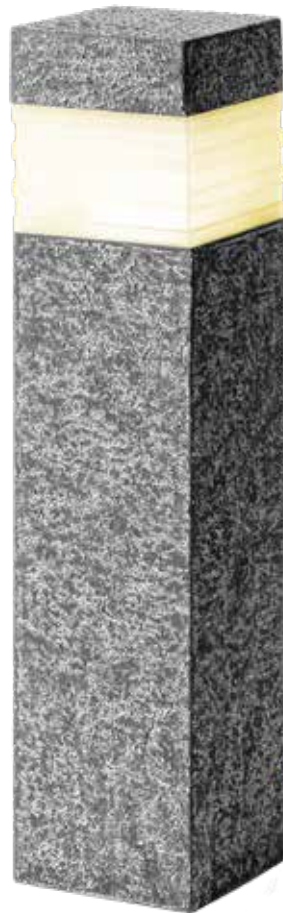
New in 2023



Fidas

2614601

Warm white
1,2 W - 110 lumen
Stainless steel 316
68 x 70 x 70 mm (H x W x D)
Borehole 60 mm Ø



Deva

3585461

Warm white
1,8 W - 150 lumen
Synthetic - cement colour
457 x 60 x 60 mm (H x W x D)



Atera

3586461

Warm white
1,8 W - 150 lumen
Synthetic - cement colour
617 x 105 x 105 mm (H x W x D)

12
volt

**Plug
& play**

5
years
warranty



Lovi

4149011

Warm white
2 W - 150 lumen
Metal - black
120 x 75 x 58 mm (H x W x D)



Ilva

4148011

Warm white
2 W - 150 lumen
Metal - black
90 x 80 x 130 mm (H x W x D)



Rune

4024601

Warm white
2 W - 150 lumen
Metal - black
555 x 80 x 127 mm (H x W x D)



Safe for
children
and animals



12
volt

**Plug
& play**

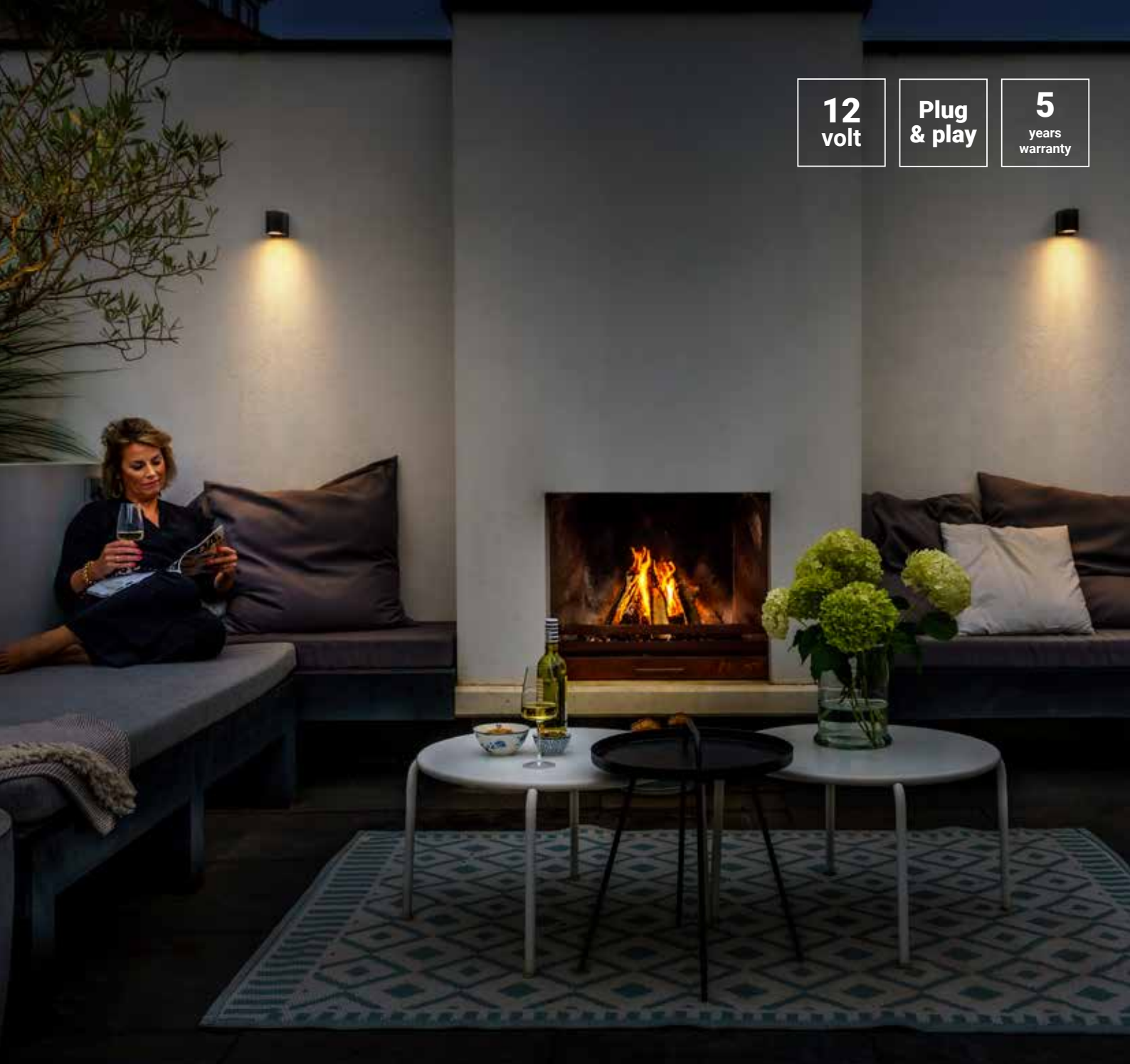
5
years
warranty

Enjoy your outdoor lifestyle all year round

Whether spring, summer, autumn or winter, the 12-Volt outdoor lighting from Garden Lights allows you to enjoy your garden until late into the night.

Outdoor lighting plays a major role in the design of a garden. With outdoor lighting, you can be creative in combining atmosphere and functionality. Garden Lights has a wide range of fixtures that will suit all tastes and budgets, whether you want to enjoy beautiful wall lighting or shine a spotlight on a hedge or shrub. With some spotlights, post or decking lights, there is a solution in the range for every tree, shrub, pathway or decking!

Outdoor lighting is used for various different functions. Of course, we often talk about creating a visually appealing garden, but lighting can also be functional. Are you tired of returning home in the evening to a dark pathway leading to your front door? Illuminate the path using beautiful post lights. These are also really important for safety reasons.



**12
volt**

**Plug
& play**

**5
years
warranty**

Advantages 12 volt system

- Very easy to install yourself
- It is not necessary to bury cables
- Safe for people and animals
- Easy to expand

**Garden
Lights**

Scan this QR code for all
installation videos or visit
www.youtube.com/GardenLights.



Easy installation

1. Choice of lighting

Within our wide product range, you select the fixtures with which you want to attractively illuminate your garden, driveway, fence, or pond. [See page 16-33.](#)

2. Choice of transformer

The total wattage of your chosen lighting determines the wattage of the required transformer. Add up the number of watts of the lights + accessories. You can then choose a 24, 60 or 150-watt transformer. Tip: always provide some extra space in terms of wattage if you choose to add a light or accessory in the future. [See page 36.](#)

3x Wall light Mauri:	18 watt
2x Spot light Neso:	4 watt
4x Post light Limosa 70:	14 watt
<hr/>	
Total	36 watt

Advice: 60 watt transformer

3. Choice of main cables

Here you have a choice of 2 systems:

System Flex: The flex main cable **Without** fixed connectors. Within the separate Flex connectors, you can choose where to connect the light to the main cable. This cable is available in 10, 25 and 50 meters.

System Fixed: The main cable **With** connectors at fixed points. This cable is available in 10 and 15 meters.

Optionally, you can expand the system with a cable divider, an extension cable and other accessories. [See page 37.](#)

System Flex

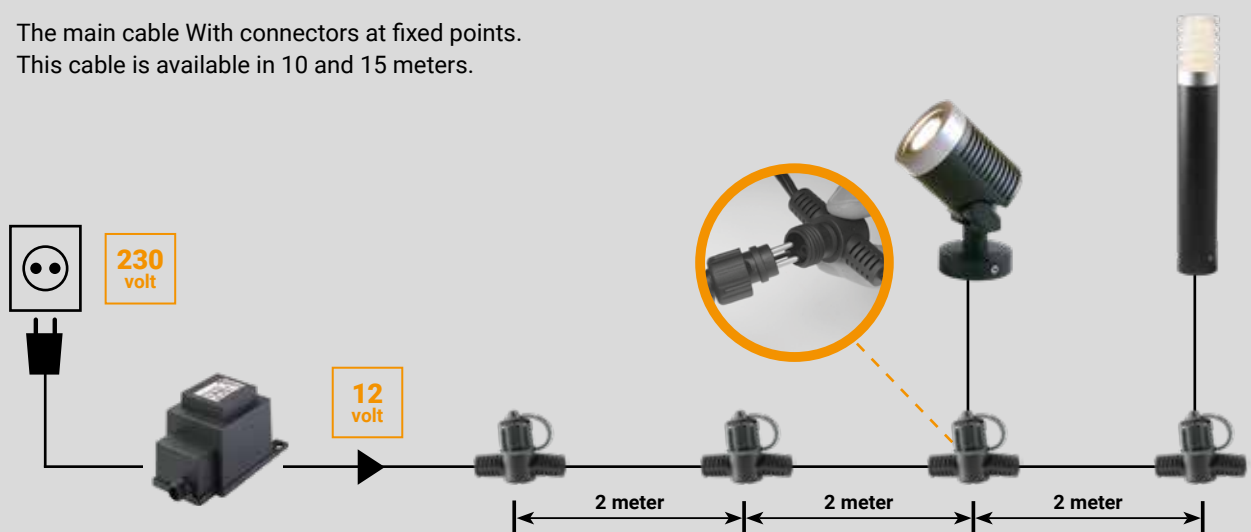
The Flex main cable Without fixed connectors.
This cable is available in 10, 25 and 50 meters.



With the Flex main cables you can decide for yourself where you want to connect the lights on the cable. You simply place the female Flex connector on the cable wherever you want. Open the connector, insert the cable and close the cover. Then connect the lights' cable to the female Flex connector. The Flex main cable is available in 10, 25 and 50 meters.

System Fixed

The main cable With connectors at fixed points.
This cable is available in 10 and 15 meters.

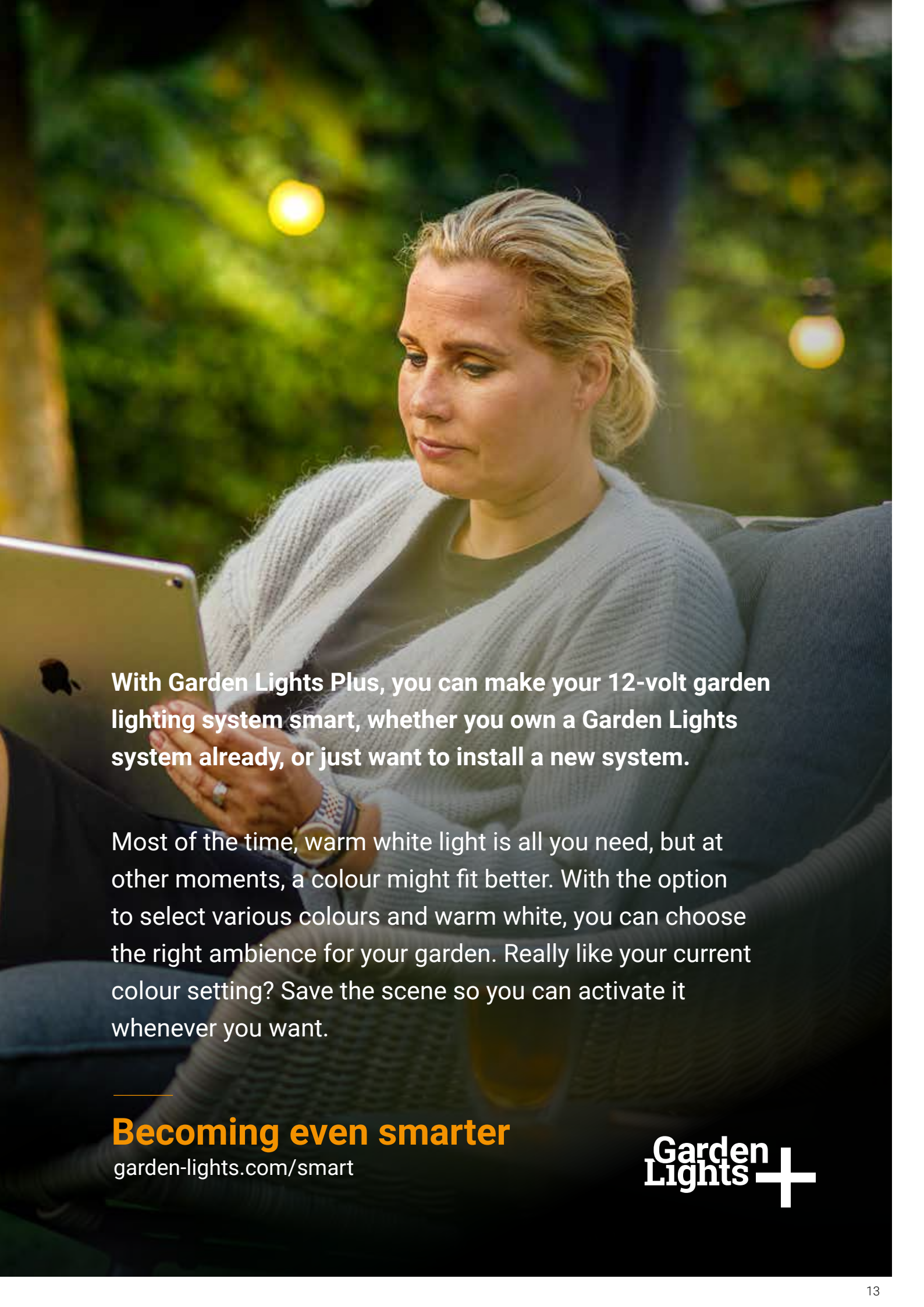


This main cable has fixed connectors on the cable. You can choose the main cable of 10 meters With 4 connection points or the main cable of 15 meters With 6 connection points. The lights' cable has a male plug that you simply connect to the fixed connector on the main cable.

A person is sitting outdoors, holding a laptop, with their legs crossed. The background is a blurred green landscape with a bright sun flare in the upper left. Large white text is overlaid on the image.

Make your garden Smart

Meet Garden Lights Plus



With Garden Lights Plus, you can make your 12-volt garden lighting system smart, whether you own a Garden Lights system already, or just want to install a new system.

Most of the time, warm white light is all you need, but at other moments, a colour might fit better. With the option to select various colours and warm white, you can choose the right ambience for your garden. Really like your current colour setting? Save the scene so you can activate it whenever you want.

Becoming even smarter

garden-lights.com/smart

**Garden
Lights+**

SMART

Make your garden smart today with the Switch Garden Lights Plus and choose from the following two options:



Option 1

Switch

Transform your 12-volt system into a smart system with one simple addition: the Switch Plus. Place the Switch Plus between the transformer and the light or group of lights. Then download the app, link the Switch to the app, and you are ready to control your outdoor lighting from your smartphone.

The benefits of the Smart Switch Plus

- + make your entire system or a part of it smart;
- + set different timers simultaneously;
- + set the built-in dark/light sensor;
- + create different zones.





Download the app here

Option 2

Smart lights

Would you like to control your lights separately, dim them, or change the colour of them? Then use smart light bulbs. Our smart lights are easy to install. Place them where you want in your garden, connect them to the 12-volt system, and then link the lights to the Garden Lights app. You're now ready to set the lights.

The benefits of the Smart Plus lights

- + control lights separately;
- + determine the colour of the light;
- + dim the light intensity;
- + set different timers simultaneously;
- + create different zones;
- + save your favorite settings as a scene.





SMART lights



Arco 40⁺

3196011

5 W - 370 lumen
Aluminium - black
410 x 65 x 65 mm (H x W x D)



Rubum⁺

3197011

5 W - 370 lumen
Aluminium - black
100 x 155 x 155 mm (H x W x D)



Focus⁺

3200011

5 W - 370 lumen
Aluminium - black
180 x 75 x 150 mm (H x W x D)

Also as set! (page 33)

12
volt

**Plug
& play**

5
years
warranty



Arcus⁺

3194011

5 W - 370 lumen
Aluminium - black
145 x 63 x 105 mm (H x W x D)



Gilvus⁺

3199011

5 W - 370 lumen
Aluminium - black
80 x 67 x 92 mm (H x W x D)

Also as set! (page 33)



Smart light source MR16

Besides the Plus lights, some of the standard light fixtures can also be made smart through the Garden Lights Plus smart light source MR16:

- Arco 40
- Arco 60
- Corvus
- Focus
- Gilvus
- Rubum
- Sibus



6279011



Feel the industry



Boaz

3212011

Warm white
1,8 W - 150 lumen
Aluminium - black
107 x 164 x 70 mm (H x W x D)



Dax

3210011

Warm white
1,8 W - 150 lumen
Aluminium - black
780 x 160 x 160 mm (H x W x D)

12
volt

**Plug
& play**

5
years
warranty



Mats

3214011

Warm white
3,5 W - 280 lumen
Steel - black
190 x 300 x 300 mm (H x W x D)

Raf

3211011

Warm white
1,8 W - 150 lumen
Aluminium - black
139 x 105 x 95 mm (H x W x D)

Filament LED



Limosa 70*

3190011

Warm white
Filament 3,5 W - 280 lumen
Aluminium - black
680 x 120 x 120 mm (H x W x D)



Limosa 90*

3191011

Warm white
Filament 3,5 W - 280 lumen
Aluminium - black
880 x 120 x 120 mm (H x W x D)

Optional:
Universal
ground spike is
available separately



See page 39

12
volt

**Plug
& play**

5
years
warranty



Celata

3188011

Warm white
Filament 3,5 W - 280 lumen
Aluminium - black
380 x 120 x 200 mm (H x W x D)



Sitta

3186011

Warm white
Filament 3,5 W - 280 lumen
Aluminium - black
220 x 120 x 120 mm (H x W x D)



Columba

3187011

Warm white
Filament 3,5 W - 280 lumen
Aluminium - black
450 x 120 x 220 mm (H x W x D)

Spotlights

Use Garden Light spotlights to elegantly light plants or statues and draw attention to your favourite garden features! Our spotlights come with a plug and are easy to install in your garden.

Lovi

4149011

Warm white

2 W - 150 lumen

Metal - black

120 x 75 x 58 mm (H x W x D)



Ilva

4148011

Warm white

2 W - 150 lumen

Metal - black

90 x 80 x 130 mm (H x W x D)



Raf

3211011

Warm white
1,8 W - 150 lumen
Aluminium - black
139 x 105 x 95 mm (H x W x D)



Focus

3151011

Warm white
2,6 W - 230 lumen
Aluminium - black
180 x 75 x 150 mm (H x W x D)

Also as set! (page 32)
3151014



Also
available as
Smart
see page 16

Arcus

3164011

Warm white
5 W - 380 lumen
Aluminium - black
145 x 63 x 115 mm (H x W x D)



Also
available as
Smart
see page 17

Corvus

3215011

Warm white
5 W - 380 lumen
Aluminium - black
190 x 85 x 130 mm (H x W x D)



Also as set! (page 32)
3216011

Alder

2580061

Warm white
1,8 W - 150 lumen
Synthetic - anthracite
135 x 40 x 95 mm (H x W x D)



Also as set! (page 32)
2580063

Neso

3164011

Warm white
2 W - 150 lumen
Polypropylene - black
220 x 38 x 70 mm (H x W x D)



Also as set! (page 32)
2606063

Catalpa

4121601

Warm white
2,6 W - 230 lumen
Stainless steel 304
125 x 80 x 80 mm (H x W x D)



Also as set! (page 33)
4121603

Minus

3096121

Warm white
2 W - 100 lumen
Aluminium - gun metal
70 x 35 x 90 mm (H x W x D)



Nano

3169191

Warm white
1,8 W - 150 lumen
Aluminium - grey
105 x 70 x 90 mm (H x W x D)



Cylon

3578501

Warm white
2,6 W - 230 lumen
Polyresin - granite black
100 x 100 x 100 mm (H x W x D)



Flood 12

9508011

Warm white
12 W - 750 lumen
Aluminium - black
150 x 154 x 45 mm (H x W x D)



Flood 20

9509011

Warm white
20 W - 1500 lumen
Aluminium - black
150 x 154 x 45 mm (H x W x D)



Suitable for continuous underwater use



Arigo

4116601

Warm white
2,6 W - 230 lumen
Stainless steel 304
125 x 90 x 68 mm (H x W x D)



Protego

4118601

Warm white
5 W - 380 lumen
Stainless steel 304
140 x 100 x 120 mm (H x W x D)



Lapis

3577441

Warm white
2,6 W - 230 lumen
Polyresin - grey
110 x 145 x 90 mm (H x W x D)



Also as set! (page 33)
3577443

Wall lights

An outdoor wall fixture can provide a pleasant and welcoming light for your garden, along the length of fencing, at your front door or out on the terrace. Choose from our wide range of modern and classic wall fixtures.

Fidas

2614601

NEW

Warm white
1,2 W - 110 lumen
Stainless steel 316
68 x 70 x 70 mm (H x W x D)
Borehole 60 mm Ø



Mats

3214011

Warm white
3,5 W - 280 lumen
Steel - black
190 x 300 x 300 mm (H x W x D)



Celata

3188011

Warm white
Filament 3,5 W - 280 lumen
Aluminium - black
380 x 120 x 200 mm (H x W x D)



Sitta

3186011

Warm white
Filament 3,5 W - 280 lumen
Aluminium - black
220 x 120 x 120 mm (H x W x D)



Columba

3187011

Warm white
Filament 3,5 W - 280 lumen
Aluminium - black
450 x 120 x 220 mm (H x W x D)



Boaz

3212011

Warm white
1,8 W - 150 lumen
Aluminium - black
107 x 164 x 70 mm (H x W x D)



Gilvus

3183061

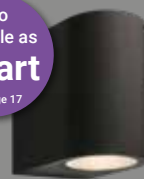
Warm white
4 W - 310 lumen
Aluminium - anthracite
80 x 70 x 92 mm (H x W x D)



Gilvus

3182011

Warm white
4 W - 310 lumen
Aluminium - black
80 x 70 x 92 mm (H x W x D)



Also
available as
Smart
see page 17

Sibus

3185061

2 x Warm white
2 x 4 W - 310 lumen
Aluminium - anthracite
152 x 70 x 92 mm (H x W x D)



Sibus

3184011

2 x Warm white
2 x 4 W - 310 lumen
Aluminium - black
152 x 70 x 92 mm (H x W x D)



Mauri

3179061

2 x Warm white
2 x 3 W - 125 lumen
Aluminium - anthracite
100 x 100 x 100 mm (H x W x D)



Mauri

3177011

2 x Warm white
2 x 3 W - 125 lumen
Aluminium - black
100 x 100 x 100 mm (H x W x D)



Goura

3180061

2 x Warm white
2 x 6 W - 125 lumen
Aluminium - anthracite
100 x 140 x 115 mm (H x W x D)



Goura

3178011

2 x Warm white
2 x 6 W - 125 lumen
Aluminium - black
100 x 140 x 115 mm (H x W x D)



Deimos

3095011

Warm white / White
1,5 W - 50 / 55 lumen
Aluminium - anthracite
80 x 140 x 140 mm (H x W x D)



Deimos

3132011

Warm white / White
1,5 W - 50 / 55 lumen
Aluminium - black
80 x 140 x 140 mm (H x W x D)



Also as set! (page 33)
3132014

Palm

2585061

Warm white
1 W - 35 lumen
Stainless steel 304
60 x 100 x 100 mm (H x W x D)



Aurora

4120601

Warm white
3 W - 130 lumen
Stainless steel 304
30 x 100 x 100 mm (H x W x D)



Nano

3169191

Warm white
2 W - 150 lumen
Aluminium - grey
90 x 70 x 65 mm (H x W x D)



Callisto

3094071

Warm white
1,1 W - 100 lumen
Aluminium/Glass - rust brown
230 x 120 x 180 mm (H x W x D)



2-colors

Lightbeam



Postlights

Our post lights are suitable for gardens, driveways or terraces. From detailed classic examples to modern and sleek designs, there's something for everyone in our wide range of raised fixtures.

NEW

Rune

4024601

Warm white

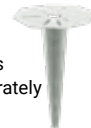
2 W - 150 lumen

Metal - black

555 x 80 x 127 mm (H x W x D)



Optional:
Universal
ground spike is
available separately



See page 39

Dax

3210011

Warm white

1,8 W - 150 lumen

Aluminium - black

780 x 160 x 160 mm (H x W x D)



Arco 40

3161011

Warm white

2,6 W - 230 lumen

Aluminium - black

408 x 65 x 65 mm (H x W x D)

Also
available as
Smart
see page 16



Arco 60

3160011

Warm white

2,6 W - 230 lumen

Aluminium - black

575 x 65 x 65 mm (H x W x D)



Linum

2519061

Warm white

2 W - 85 lumen

Synthetic - anthracite

160 x 60 x 60 mm (H x W x D)

Also as set! (page 33)

2519064



Limosa 70*

3190011

Warm white

Filament 3,5 W - 280 lumen

Aluminium - black

680 x 120 x 120 mm (H x W x D)



Limosa 90*

3191011

Warm white

Filament 3,5 W - 280 lumen

Aluminium - black

880 x 120 x 120 mm (H x W x D)



Deva

3585461

Warm white
1,8 W - 150 lumen
Synthetic - cement colour
457 x 60 x 60 mm (H x W x D)

NEW



Atera

3586461

Warm white
1,8 W - 150 lumen
Synthetic - cement colour
617 x 105 x 105 mm (H x W x D)

NEW



Phobos*

3538461

White
1,5 W - 88 lumen
Polyresin/Glass -
stone effect anthracite
400 x 105 x 105 mm (H x W x D)



Kolossos*

3544461

White
1,5 W - 88 lumen
Polyresin/Glass -
stone effect anthracite
600 x 105 x 105 mm (H x W x D)



Nepos*

3579401

Warm white
2,6 W - 230 lumen
Polyresin/Glass -
stone effect grey
400 x 105 x 105 mm (H x W x D)



Titan*

3580401

Warm white
2,6 W - 230 lumen
Polyresin/Glass -
stone effect grey
600 x 105 x 105 mm (H x W x D)



Albus

4024601

Warm white
1,5 W - 170 lumen
Stainless steel 304
410 x 60 x 60 mm (H x W x D)

Also as set! (page 33)
4024603



Atila

4025601

Warm white
1,5 W - 170 lumen
Stainless steel 304
610 x 60 x 60 mm (H x W x D)



Lunia

4150011

Warm white
1 W - 90 lumen
Stainless steel 304
440 x 60 x 60 mm (H x W x D)



Lunia

4138601

Warm white
1 W - 90 lumen
Stainless steel 304
440 x 60 x 60 mm (H x W x D)

Also as set! (page 32)
4138603



Silia

4139601

Warm white
1 W - 90 lumen
Stainless steel 304
600 x 60 x 60 mm (H x W x D)



Ceto

3213011

Warm white
2 W - 100 lumen
Aluminium - black
440 x 190 x 190 mm (H x W x D)



Laurus

2573061

Warm white
1,1 W - 95 lumen
Synthetic - anthracite
365 x 120 x 120 mm (H x W x D)



Locos

3072071

Warm white
1,1 W - 100 lumen
Aluminium/Glass - rust brown
530 x 120 x 120 mm (H x W x D)



Larix

2572061

Warm white
1,1 W - 95 lumen
Synthetic - anthracite
315 x 100 x 100 mm (H x W x D)



Deck-/ uplights

Illuminating ground spots

Ground spot lights can be used to illuminate a tree or object and you can easily incorporate them into gravel or sand. Ground spots aren't very noticeable during the day, but they create a beautiful effect in the evening!

Rubum

3159011

Warm white

5 W - 380 lumen

Aluminium - Black

110 x 155 x 155 mm (H x W x D)

Including ground tube

Borehole 120 mm Ø



Umbra

3152051

Warm white

2,6 W - 230 lumen

Stainless steel 304

85 x 105 x 105 mm (H x W x D)

Borehole 70 mm Ø



Gavia

4134601

Warm white / White

2 W - 85 / 90 lumen

Stainless steel 304

115 x 115 x 115 mm (H x W x D)

Including ground tube

Borehole 90 mm Ø



Carbo

4135601

Warm white / White

2 W - 85 / 90 lumen

Stainless steel 304

115 x 115 x 115 mm (H x W x D)

Including ground tube

Borehole 90 mm Ø



Orientation lights

Orientation spotlights can be installed in decks or stones. Place them randomly for a lovely effect or in a line to show the edge of a path.

Acis

4140601

Warm white
0,2 W - 15 lumen
Stainless steel 304
20 x 40 x 40 mm (H x W x D)
Borehole 30 mm Ø



Also as set! (page 33)
4140603

Astrum

3029601

White
0,3 W - 1 lumen
Stainless steel 304
28 x 40 x 40 mm (H x W x D)
Borehole 30 mm Ø



Astrum

3037601

Blue
0,3 W - 1 lumen
Stainless steel 304
28 x 40 x 40 mm (H x W x D)
Borehole 30 mm Ø



Alpha

4048601

Warm white
0,5 W - 10 lumen
Stainless steel 316
46 x 42 x 42 mm (H x W x D)
Borehole 30 mm Ø



Alpha

4112601

White
0,5 W - 10 lumen
Stainless steel 316
46 x 42 x 42 mm (H x W x D)
Borehole 30 mm Ø



Alpha

4059601

Blue
0,5 W - 2 lumen
Stainless steel 316
46 x 42 x 42 mm (H x W x D)
Borehole 30 mm Ø



Birch

4057601

Warm white
0,5 W - 10 lumen
Stainless steel 304
45 x 40 x 40 mm (H x W x D)
Borehole 30 mm Ø



Also as set! (page 33)
4057603

Atria

4077601

Warm white
0,5 W - 10 lumen
Stainless steel 316
45 x 42 x 42 mm (H x W x D)
Borehole 30 mm Ø



Brevus

2520601

White
1 W - 35 lumen
Stainless steel 304
52 x 70 x 70 mm (H x W x D)
Borehole 60 mm Ø



Larch

4058601

Warm white
1 W - 35 lumen
Stainless steel 304
52 x 70 x 70 mm (H x W x D)
Borehole 60 mm Ø



Also as set! (page 33)
4058603

Sirius

4113601

Blue
1 W - 5 lumen
Stainless steel 316
52 x 70 x 70 mm (H x W x D)
Borehole 60 mm Ø



Sirius

4039601

Warm white
1 W - 35 lumen
Stainless steel 316
52 x 70 x 70 mm (H x W x D)
Borehole 60 mm Ø



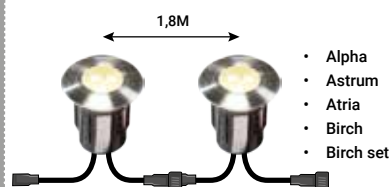
Leda

4040601

Warm white
1 W - 35 lumen
Stainless steel 316
52 x 70 x 70 mm (H x W x D)
Borehole 60 mm Ø



The following ground spots for orientation lighting can easily be connected to each other:



Decorative lights

A pleasant atmosphere in your garden enhances the outdoor experience, making it almost indispensable! Our decorative lights are real 'eye-catchers' that stand out in every garden. Within the range, you will find the lighting you are looking for, so you can create the desired atmosphere in your garden.



Party Lights

2607061

Warm white

8 W - 60 lumen (per bulb)

Synthetic - black

10 m (10 bulb's)



Party Lights

2607061

Warm white
8 W - 60 lumen (per bulb)
Synthetic - black
10 m (10 bulb's)



Linea 1

7510012

Warm white
1,8 W - 3 lumen (per LED)
Synthetic - black
10 m (100 LED's)



Linea All Seasons

7523010

Warm white
4,5 W - 7,5 lumen (per LED)
Synthetic - black
10 m (100 LED's)



+

SMART

Round 30 SMART+

2577061

5 W - 370 lumen
Polyethylene - White
Ø 300 mm



Round 40 SMART+

2578061

5 W - 370 lumen
Polyethylene - White
Ø 400 mm



Sets

A set includes several lamps, a mains cable and a transformer. The lamps are easy to connect to each other, with multiple adjacent lamps creating a beautiful effect that allows you to enjoy your garden in the evening. Furthermore, it's always a great feeling to know your house and garden are well lit.



Focus Set

3151014

Warm white

2,6 W - 230 lumen

Aluminium - black

180 x 75 x 150 mm (H x W x D)

8M SPT-1W 18AWG

24 W Transformer

Lunia Set

4138603

Warm white

1 W - 90 lumen

Stainless steel 304

440 x 60 x 60 mm (H x W x D)

8M SPT-1W 18AWG

12 W Transformer



Neso Set

2606063

Warm white

2 W - 150 lumen

Polypropylene - black

220 x 38 x 70 mm (H x W x D)

8M SPT-1W 18AWG

12 W Transformer



Alder Set

2580063

Warm white

1,8 W - 150 lumen

Synthetic - anthracite

135 x 40 x 95 mm (H x W x D)

8M SPT-1W 18AWG

12 W Transformer



Corvus Set

3215011

Warm white

5 W - 380 lumen

Aluminium - black

190 x 85 x 130 mm (H x W x D)

8M SPT-1W 18AWG

24 W Transformer



Linum Set

2519064

Warm white
2 W - 85 lumen
Synthetic - anthracite
160 x 60 x 60 mm (H x W x D)
8M SPT-1W 18AWG
24 W Transformer



Oak Set

4122603

Warm white
1 W - 35 lumen
Stainless steel 304
202 x 48 x 48 mm (H x W x D)
8M SPT-1W 18AWG
12 W Transformer



Albus Set

4024603

Warm white
1,5 W - 170 lumen
Stainless steel 304
410 x 60 x 60 mm (H x W x D)
8M SPT-1W 18AWG
24 W Transformer



Deimos Set

3132014

Warm white / White
1,5 W - 50 / 55 lumen
Aluminium - black
80 x 140 x 140 mm (H x W x D)
8M SPT-1W 18AWG
24 W Transformer



Lapis Set

3577443

Warm white
2,6 W - 230 lumen
Polyresin - grey
110 x 145 x 90 mm (H x W x D)
8M SPT-1W 18AWG
24 W Transformer



Catalpa Set

4121603

Warm white
2,6 W - 230 lumen
Stainless steel 304
125 x 80 x 80 mm (H x W x D)
8M SPT-1W 18AWG
12 W Transformer



Birch Set

4057603

Warm white
0,5 W - 10 lumen
Stainless steel 304
45 x 40 x 40 mm (H x W x D)
Borehole 30 mm Ø
8M SPT-1W 18AWG
12 W Transformer



Acis Set

4140603

Warm white
0,2 W - 15 lumen
Stainless steel 304
20 x 40 x 40 mm (H x W x D)
Borehole 30 mm Ø
5M SPT-1W 18AWG
12 W Transformer



Larch Set

4058603

Warm white
1 W - 35 lumen
Stainless steel 304
40 x 70 x 70 mm (H x W x D)
Borehole 60 mm Ø
8M SPT-1W 18AWG
12 W Transformer



Focus+ Set

3193012

5 W - 370 lumen
Aluminium - black
180 x 75 x 150 mm (H x W x D)
8M SPT-1W 18AWG
24 W Transformer



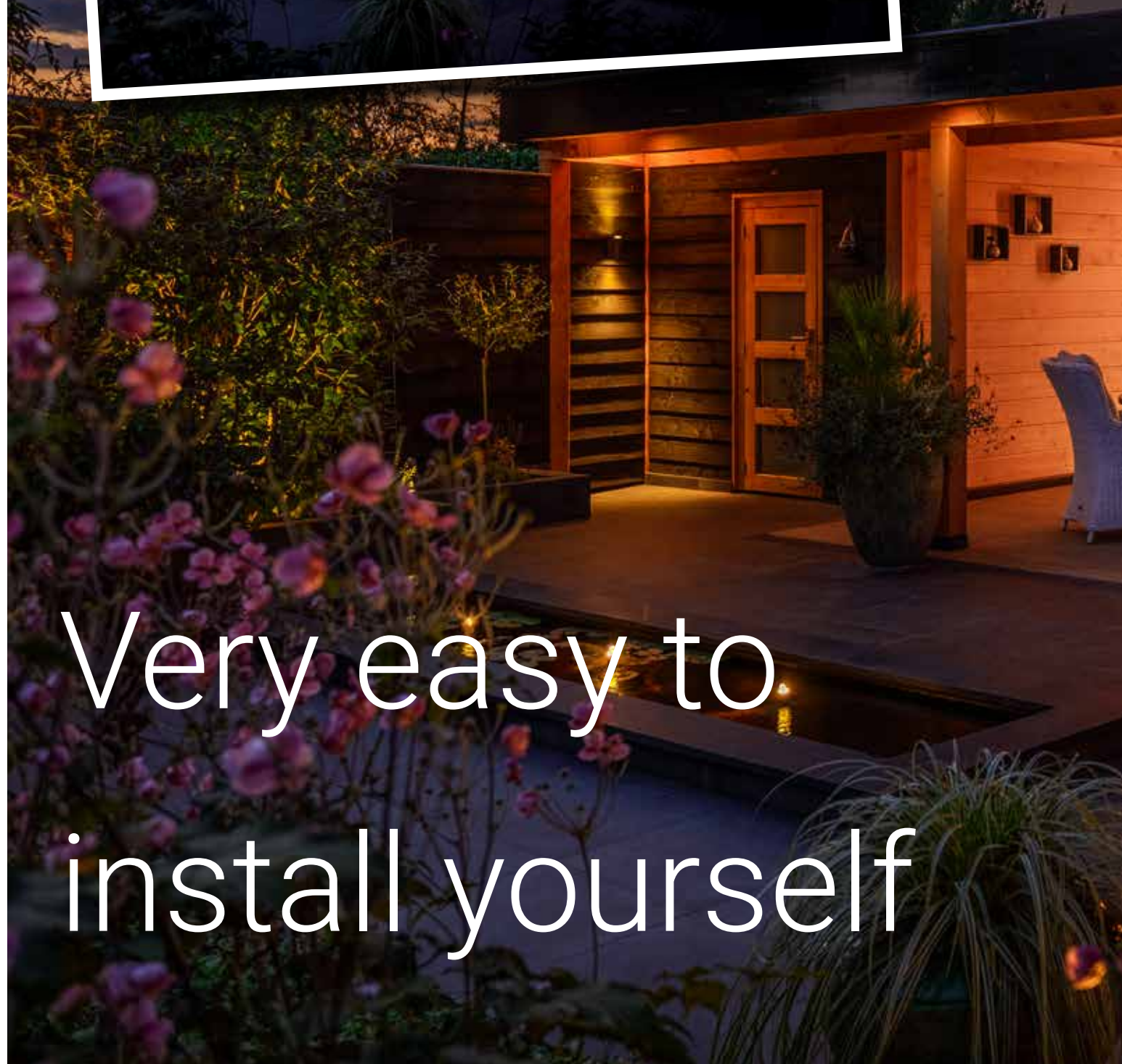
Gilvus+ Set

3198012

5 W - 370 lumen
Aluminium - black
80 x 70 x 92 mm (H x W x D)
8M SPT-1W 18AWG
24 W Transformer



SMART



Very easy to
install yourself



12
volt

**Plug
& play**

5
years
warranty

Accessoires

The installation of 12-Volt outdoor lighting requires accessories such as: transformers, cables and connectors. A motion detector and remote control can also be a good addition to the lighting plan.



12 volt transformers

UK	EU	
6273011	6270011	max. 24 W
6213011	6210011	max. 60 W
6214011	6211011	max. 150 W

Choose your Garden Lights cable system

Cablesystem Flex



12 volt Flex main cables

- 6259011 Flex maincable 10 Meters (SPT-2W 16AWG)
- 6260011 Flex maincable 25 Meters (SPT-2W 16AWG)
- 6281011 Flex maincable 50 Meters (SPT-2W 16AWG)

12 volt Flex Connectors

- 6261011 Female
- 6262011 Male



Cablesystem Fixed

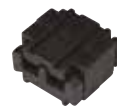


12 volt Main cables with fixed connection points

- 6007011 10 Meters with 4 Connectors (SPT-1W 18AWG, max. 120 W)
- 6008011 15 Meters with 6 Connectors (SPT-3W 16AWG, max. 150 W)

12 volt Connectors

- 6013011 Connector (SPT-1 > SPT-1)
- 6014011 Connector (SPT-1 > SPT-3)
- 6165011 Screw connector SPT-1
- 6166011 Screw connector SPT-3



CONNECTOR
Repair of
defective cables



SCREWCONNECTOR
Light connection

12 volt Extension cables

- 6154011 Extension cable - 2 Meters (SPT-1W 18AWG)
- 6005011 Extension cable - 6 Meters (SPT-1W 18AWG)
- 6056011 Extension cable - 10 Meters (SPT-3W 16AWG)



Cable connector

6006011

Cable connector
15 cm SPT-2W 16AWG
(with 3 connectors)





12 Volt Switch Plus SMART

6269011

- Makes your garden SMART
- In combination with the Garden Lights app
- Bluetooth
- Including wall mounting bracket and ground spike

12 Volt Remote Control + Outdoor Receiver

6148011 12 V Remote + Receiver, max 150 W
6149011 12 V Receiver, max 150 W

- Control 9 groups of receivers separately with one remote control
- Range up to 40 Meters (in open terrain)



12 Volt Dusk to Dawn Sensor + Timer

6009011

- Max. 150 W
- 1 Meter cable
- On/off
- Dusk- / dawn sensor
- 1-9 hours



12 Volt Motion Sensor

6156011

- 3 Meter cable
- Turns on automatically when approaching the detection area
- Detection area, horizontal 90° and vertical 45° up to 5 meter
- Adjustable switching time: 20 sec., 1 min. or 5 min.
- Not recommended in combination with timer and / or remote / receiver
- Max. 60 W

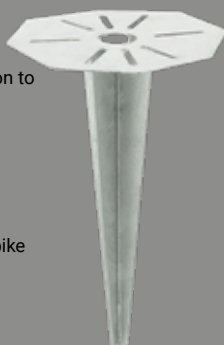


Universal Ground Spike Metal

1363011

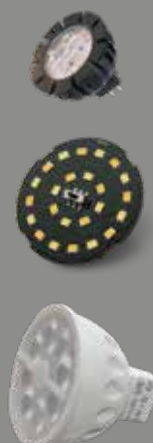
The groundspike is the ideal and practical solution to secure the following garden lights:

- Kolossos
- Phobos
- Titan
- Nepos
- Limosa
- The round plate is Ø 185 mm and the ground spike goes 300 mm in the ground.



Light sources

To replace your current light source, see www.garden-lights.com/downloads for an overview of all lights sources.





Garden Lights

UK's Largest Techmar Distributor
www.gardenlightshop.com

Tel: 01276 903228
Email: sales@gardenlightshop.com
Free planning service available